

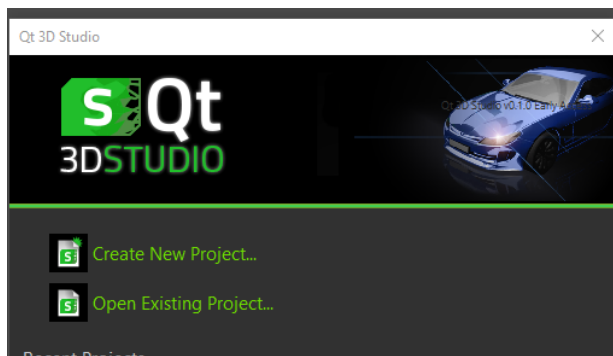
Test sequences for Qt 3D Studio

Should be tested with different monitors. Video recordings were done in 1920 x 1200.

There may be issues especially with inspector, when editing materials and trying to change maps, when display has been changed. Pop-up dialogs may appear in wrong monitor or may not appear at all. This can be corrected from Edit -> Studio Preferences -> Restore Defaults.

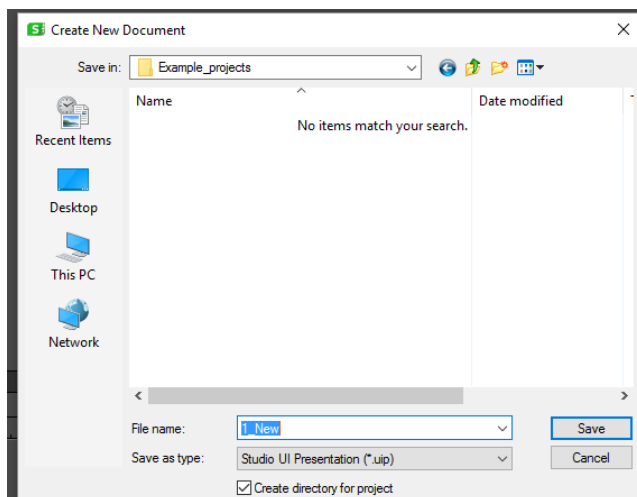
1: Create New project

Step 1: Select Create New Project



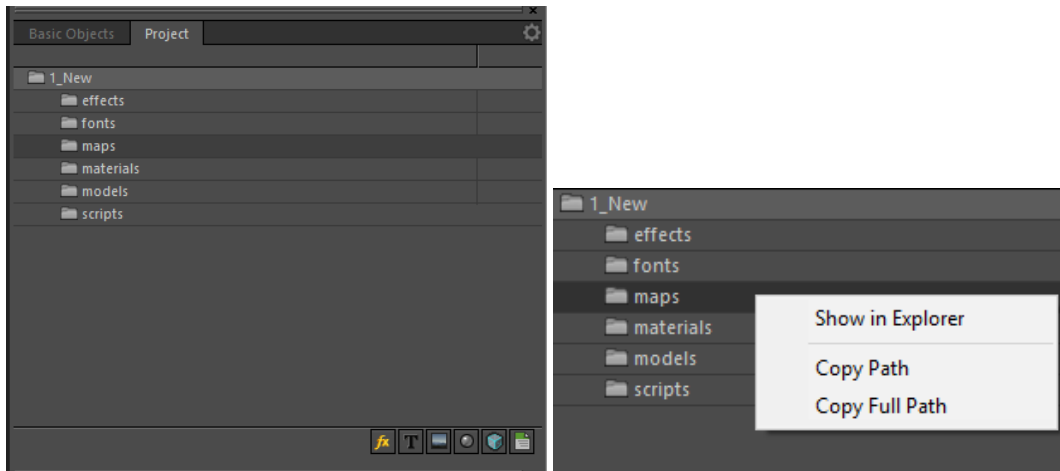
Step 2. Browse to target folder and give name

- Give name
- Have "Create New Directory" checked
- Click save



Result:

In Studio → Project palette there should be following project structure. Empty folders, cannot be expanded.

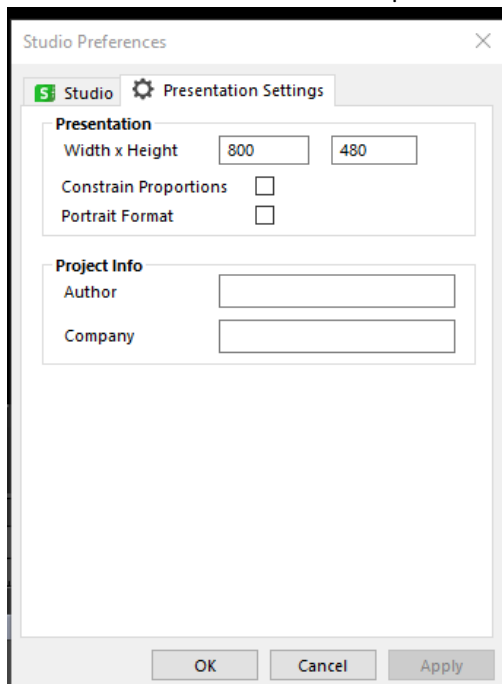



Right click should open context menu. Test Show in Explorer, should open the (now empty) folder.

Step 3: Presentation settings. User needs to be able to change the settings and test them.

Check that Fit Selected  (next to Edit Camera menu) is not selected

- Edit → Presentation settings
- Enter new values and see – Tab key should work when moving between fields
 - o Width & height, different values. Change both, only one, small sizes, larger sizes
 - o Hit Apply between changes → should update the scene view. If large and , should add
- Similar check with Constrain Proportions selected.

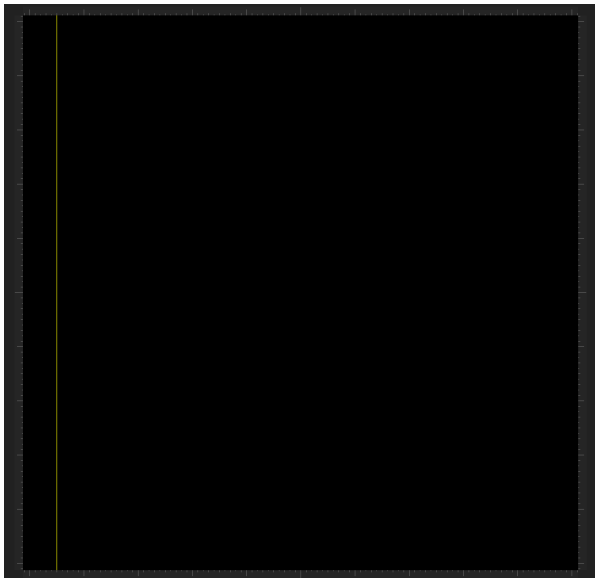


- As a last step, set large size like 3000 x 2000 (should be too large to be shown without scrollbars)
- Apply
- OK
- Test now Fit selected 
- Change size once more, set it to 1024 x1024. It will be used with other tests.

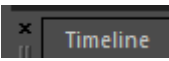
Step 4: Guides

If Fit Selected is still on, deactivate it.

- Drag guides from every edge
- Test that you are able to move them
- View → Rules & Guides: uncheck / check the selection. Should show/ hide the guides
- Finally, remove all the guides by dragging them off from the Scene view area to the Matte area.



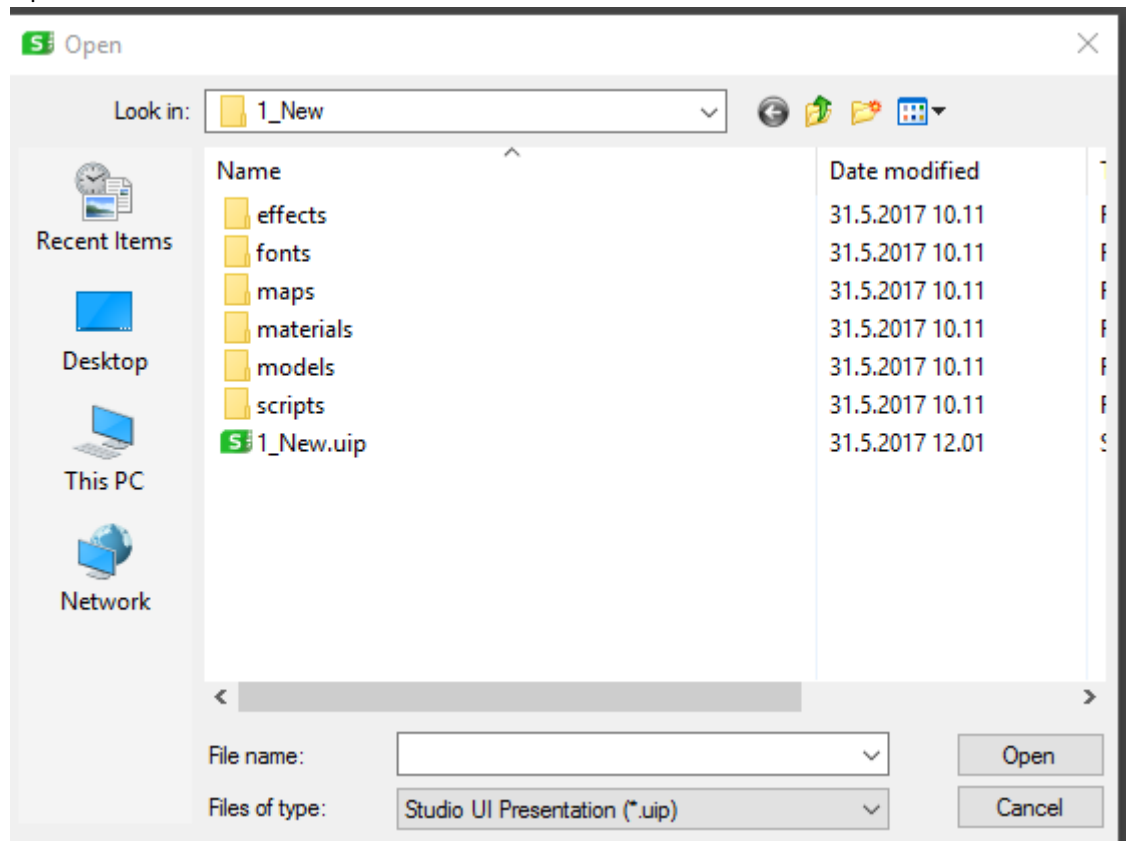
Step 5: Adjustin panels

- Resize all the panels to the minimum by dragging from edges
- Resize them to maximum size, one by one
- Resize them to usable size
- Close them all from small cross on top of each panel 
- Get them back from View menu → select panel names. They should appear in the same size they were closed.

Step 6: Save, Close, Reopen

- Menu → Save (Ctrl +S)

- Exit
- Open Editor again
 - o Dialog should display created project in the list
 - o Select Open Existing project → Should open to correct folder
 - o Select .uip
 - o Open



o